

# Master of Public Management & Administration (MPMA) Course



Master of Public Management and Administration Course

Graduate School of Business

RIKKYO UNIVERSITY

Ikebukuro, Tokyo, Japan

## Dean's Message



Ayano NISHIHARA, DBA  
Dean  
Graduate School of Business

We cordially welcome you to the Master of Public Management and Administration (referred to as MPMA) Course in the Master of International Management Program at Rikkyo University.

Founded in 1874 by Episcopalian missionaries, Rikkyo University is one of the oldest, most competitive and popular private universities in Japan. In 2024, the university will celebrate its 150th anniversary.

Since its founding, Rikkyo University has maintained a tradition of academic freedom, welcoming students and scholars from diverse backgrounds. Diversification leads to new cross-fertilization and new combinations that create new value. It also brings understanding and appreciation of each other's differences, enriching not only the campus but also the environment beyond it.

In recognition of Rikkyo's innovative education, Japan's Ministry of Education, Culture, Sports, Science and Technology selected us for its Top Global University Projects in 2014. The MPMA course launched in 2016 as the flagship of this project within the Graduate School of Business, is aimed at mid-career professionals who wish to enhance their skills in policy analysis and management in both the government and non-government sectors. Our faculty members are actively involved in teaching and research, providing students with the latest practical expertise.

We look forward to welcoming you to Rikkyo University for a unique experience where you can learn from passionate scholars and from each other.

## MPMA Course

The Master of Public Management and Administration (MPMA) Course is an English-medium two-year Master's program. It is designed particularly to nurture and develop the student's ability to analyze, formulate, manage and evaluate policies and programs in the fields of public management and economics. In addition, MPMA students may take a variety of business-related courses offered by the Master of International Business Course in the Graduate School of Business. The MPMA Course is particularly suitable for those individuals who are working in government and public sectors, and those interested in careers in government, NGO/NPOs, international organizations or Ph.D. programs after graduation.

In the first year, MPMA students will take required courses and build up their knowledge, theories, and skills. Students also learn to utilize various computer software and databases used commonly by economists and various international organizations. From the second semester on, students take a variety of elective courses. A mix of elective courses will help students develop a well-balanced set of skills and points of view. In the second year, students write a master's thesis under close supervision of a supervisor.

Upon successfully completing a minimum of 30 credits and a quality master's thesis, students will be awarded a Master of Public Management and Administration degree.

After graduation, our students are expected to play active leadership roles in their chosen fields.



## Facilities

### Library

In November 2012, the Ikebukuro library opened its doors after unifying four libraries located on the Ikebukuro campus.

It can house more than two million books, has a large seating capacity for more than 1,530 people, and is one of the largest university libraries in Japan.

The Ikebukuro Library offers strong support for learning, education, and research activities by meeting diverse range of needs, combined with its ease of use.



### Center for Japanese Language Education

Rikkyo's Center for Japanese Language Education offers a well-designed sequence of Japanese language courses to our students. We offer beginner-level courses, where students who have not studied Japanese before can be enrolled, up to advanced-level courses. There are light-loaded and normal-loaded tracks at the beginner's level. The Center also offers Japanese Language courses as well as Japanese Culture courses, conducted in English, to provide students with opportunities to learn about Japanese language and various cultural aspects of the Japanese language.

### International Office

International Office establishes policy regarding activities for international exchange, and oversees the planning and implementation of international exchange programs. The office also gives various supports for international students including visas.

### On-campus Medical Clinic and Counseling Services

Ikebukuro campus has an on-campus clinic for students, faculty and staff members. Students can get general medical treatment free of charge, provided that they have joined the National Health Insurance and Rikkyo Student Mutual-Aid Insurance. Counseling services are also available.

### MPMA Student Room

MPMA also provides the Study Rooms to support student's study and research. Such software as GAUSS and STATA are installed in the PCs.



### Cafeteria/Restaurants

There are a number of cafeterias and restaurant on the Ikebukuro campus. In June 2022, we newly provided the cafeteria for Muslim in the Ikebukuro campus which has obtained the Halal authentication.

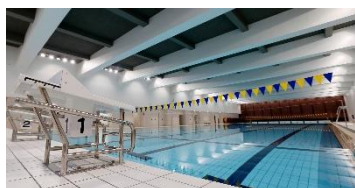


### Media Center

The Media Center provides support for educational research use of computers and multimedia equipment.

### Paul Rusch Athletic Center

The new athletic center offers a 50-meter heated pool, tennis courts, gymnasiums, a training room and other excellent facilities.



### St. Paul's Plaza (bookstore, travel agent)

Students can purchase textbooks, books and stationery supplies at a discount price. There is also a travel agency to assist domestic as well as overseas travels.

### Places of Worship

There are a number of places for worship in Ikebukuro and its vicinity for various religions.

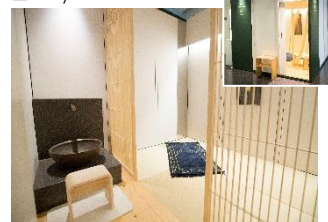
The Chapels on the Rikkyo campuses offer daily prayer services and regular mass. Various social activities are organized by the Chapels.

There is a prayer room on the Ikebukuro campus.

We also provide a prayer room on the Ikebukuro Campus which can be used by anyone, regardless of their religion.



### Prayers room



## Voices from MPMA Students

### PHAM VAN TRUONG (Class of 2021)



Studying abroad in Japan under the spread of COVID-19, everything is beyond my expectation. Having been confronted with an unprecedented and uncertain situation brought by the pandemic, Rikkyo University offered great support to students such as Learning Environment Scholarship, internet equipment, software license that serve our best convenience in studying.

It is also an opportunity to prove how excellently world-class faculty members adjust their teaching styles and how considerate professional MPMA office staff are. Interestingly, we receive more practical lectures even the classes are conducted entirely online.

Although social distance measures are applied, we are still able to access Rikkyo Library - one of the largest university libraries in Japan, fully equipped study rooms, modern sports facilities, instrumental field trips, and so on. I am pretty sure I spend my fruitful academic life with an incredibly rewarding experience at Rikkyo University.

### MONTCHEBOLATAN NICOLE CHABI (Class of 2020)



Out of all my experiences studying, Rikkyo University has been till date the best university ever attended in my life. The staff and faculty are amazing. My senseis (as I love to call my professors) were highly talented, sociable and understandable. The library and the study room are calm places where we could concentrate to study.

Though each course requires hard work and discipline to achieve excellence, the MPMA program is very flevible and gives the opportunity to choose from a range of courses with the guidance of the supervisor.

I had the chance to be part of a multinational and multicultural class which enhanced my open-minded spirit and fostered my sense of diversity, and through the class I could build up the great relationship with brilliant classmates.

I also joined some volunteering activities which were offered by The international office such as green tea ceremonies, games activities and many others to improve student's integration. Rikkyo is not just a university, it is a life building community and I am forever grateful to God for having been part of this community.

### AJI WITRI MUKTI (Class of 2019)



I always dream to study in Japan. Studying at Rikkyo University made my dream come true. Rikkyo University such a beautiful place to study supported with the high technology facilities, such as a huge and well-organized library, a comfortable study room equipped with PC's, four cozy canteens, professional sports facilities and the most important for me as a Moslem a prayer room. This campus creates a conducive environment to fulfill my need as a student with a kind and helpful teacher and staff. Moreover, the staff will guide and help you with thoughtful service. Our teachers are the experts in their field study, especially in the MPMA program. The course not only conducting an indoor class but also in outdoor by field trip program from the course or campus. Rikkyo University satisfies my expectation about the ideal campus to learn. I am proud to be a part of Rikkyo University.

## About Rikkyo University

Rikkyo was founded in 1874 by an American Bishop, Channing Moore Williams, and has a long history of excellence in education and research, which, combined with substantial investment in state-of-the-art information technology and teaching facilities, has earned a reputation as an outstanding educational institution and one of the most sought-after universities in Japan. Today, Rikkyo enrolls over 19,000 undergraduate and 1,200 graduate students in its ten colleges and fourteen graduate schools. Rikkyo usually has over 700 overseas students from various parts of the worlds.

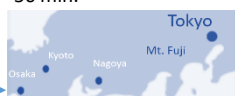
Rikkyo University has two campuses: one in Ikebukuro, Tokyo and the other in Shiki, Saitama-prefecture which borders on northwest Tokyo. The main campus is located in Ikebukuro, one of the largest commercial and transportation hubs in the heart of metropolitan Tokyo. And our Ikebukuro campus, where the Master of Public Management and Administration Course students will study, is located only a few minutes-walk from Ikebukuro-Station.

In recognition of the Rikkyo's unique educational initiatives, achievements and potential, the Ministry of Education, Culture, Sports, Science and Technology-Japan launched the Top Global University Project and selected Rikkyo as one of the 37 universities for special funding in 2014. The project lasts for 10 years.

## Access



- Narita - 〇 Ikebukuro  
90 min. (JR Narita Express)  
60 min. (Keisei Sky L./Yamanote L.)
- Haneda - 〇 Ikebukuro  
50 min.



☞ For more details

### Maps & Directory

<https://english.rikkyo.ac.jp/map/index.html>



# Title list of Master's Thesis (Rikkyo MPMA Course 2019-2023)

\* You can get more information at our website.  
([https://mpma.rikkyo.ac.jp/research\\_n\\_faculty.html](https://mpma.rikkyo.ac.jp/research_n_faculty.html))

2019	The Effect of Intergroup Contact on Indigenous People's Perception of Transmigrants-: Case Study of West Kalimantan Province of Indonesia
	The Impact of Micro Finance Initiatives on Gender Relations- A Case of the Copper belt Province in Zambia
	Explaining Voting Patterns in Zambia's 2016 Presidential Elections
	Asymmetric Pass- Through of Fuel Price to Food Price: The Case of Nepal Foreign Aid and Foreign direct Investment: Evidence from Panel Analysis
	Renewable Energy Consumption in Emerging Countries and Developed Countries: A Panel Cointegration Analysis
	Spatial Dimensions of Economic Growth, Redistribution, and Poverty Reduction during the Yudhoyono Period in Indonesia
	Targeting and the Impact of National Health Insurance Program in Indonesia
	Do Negotiations Lead to Price Decline in Government Procurement? The Effect of Frequency of Negotiations between Buyers and Sellers on the Transacted Price of Vehicles in Public Sector in Indonesia
	Why Non Poor Households Have Received Conditional Cash Transfer: An Analysis Based on 2013, 2014 and 2017 SUSENAS.
	The Effect of Ethnic Diversity on Expenditure Inequality in Indonesia
	Explaining Indonesia E-Participation Variation and How to Improve it
	Inequality and Political Trust in Indonesia Technical Efficiency Analysis of Indonesian Small and Micro Industries: A stochastic Frontier Approach
	Spatial Distribution of the Household Expenditure of Fuel Transportation Product in North Sumatera Province
	Does Female Politician Affect Policy Outcomes in Indonesia?
Demand Analysis for Fish in Indonesia	
2020	Frontier Analysis of Vietnamese Electronic Manufacturing Firms: Using Bootstrap Data Envelopment Analysis Model
	Asymmetric Responses of Stock Prices to Oil Prices in Vietnam: Any Difference between Energy-Demanding and Energy-Supplying Sectors?
	Understanding Residents Attitudes Toward Public Works Projects in Vietnam: Case Study of the National Road Project in Hanoi
	Citizen's Service Satisfaction, Regional, Affiliation, Interpersonal Trust and Trust in Government in the Republic of Benin
	A non-parametric bootstrap data envelopment analysis for Nepalese agricultural farming households
	Trade Openness and Government Revenue Diversification: Some Evidence From Resource-Dependent Countries
	Open Burning Behavior at Household Level in Indonesia
	Forest Fire in Indonesia 2015-2018
	Electricity-Saving Behaviors of Household in Indonesia
	Export Behavior and Firm Productivity in Micro and Small Manufacturing Firms in Indonesia: Limited Dependent Model Approaches
	Does Mayor's Previous Career Matter?
	Analysis of Household Poverty Status in Riau Island Province
	Examining the gateway hypothesis of drug use and individual characteristics: The case of Indonesia
	Household Head Education Attainment And The Urban-Rural Expenditure Inequalities in Jokowi's First Term
Does Damage from Natural Disaster Affect Child Labor? Evidence from Indonesia	
2021	How Prosocial Motivation and Perception of Job's Usefulness Affect Job Satisfaction and Turnover Intention among Employees in Vietnam.
	People's Attitude to Compulsory Land Acquisition for Socioeconomic Development in Vietnam
	A Non-Parametric Frontier Analysis with Firm-Level Data in the Vietnamese Garment Sector
	Agricultural Tourism Demand of Citizens for Rural Farming Areas in Vietnam
	Determinants of Net Micro, Small, and Medium Enterprise (MSME) Formations in the Philippines
	Shadow Banking and House Price in China: Some Evidence from the Province-Level Data
	Bribery to Bureaucrats: Experimental Evidence from Nepal
	Examining Voters' Attitude toward Female Candidate in Local Executive Elections in Nepal:
	Survey Experimental Analysis
	Return to Education by Ethnicity in Indonesia: Instrumental Variable Approach
	Credit and Household Expenditure in Indonesia: Bank or Non-Bank?
	The Role of Information and Communication Technologies (ICT) Development on Inequality in Indonesia
	Asymmetric Response of Unemployment Rate to an Export Shock in Indonesia: Does Educational Attainment Matter?
	Interregional Display and Spatial Autocorrelation of Access to Water and Sanitation in Indonesia
Job Informality and Gender Inequality during COVID-19 Pandemic: The Risk of Income Loss, Working Hours Loss, and Job Loss	
Measuring the Efficiency and Productivity of Regional Water Utility Company (PDAM) in Indonesia from 2012-2016	
2022	GENERATION Z'S POINT OF VIEW ON OVERTIME WORK AND WORKPLACE SELECTION: EXPERIMENTAL EVIDENCE FROM INDONESIA
	EVALUATING IMPACT OF PROVINCIAL LEVEL PUBLIC ADMINISTRATION REFORM IN VIET NAM FROM GOOD GOVERNANCE PERSPECTIVE: BUSINESS ENVIRONMENT AND CITIZEN PARTICIPATION
	THE IMPACT OF OFFICIAL DEVELOPMENT ASSISTANCE (ODA) THROUGH THE FORESTRY PROJECTS ON THE FOREST AREAS IN VIETNAM: A PANEL DATA ANALYSIS FROM 2010 TO 2020
	SPATIAL DISTRIBUTION PATTERN OF POVERTY INCIDENCE IN THE PHILIPPINES
	PERCEPTION OF THE YOUNG GENERATION ON SAFE ABORTION IN THE PHILIPPINES
	THE INFLUENCE OF TRUSTS ON COLLEGE EDUCATION: CASE STUDY OF CHINA 2018 SURVEY DATA
	Relationship between the growth of textile industry and water pollution in China
	INCOME INEQUALITY BETWEEN GENDERS IN INDONESIA
	A BLINDER-OAXACA DECOMPOSITION ANALYSIS OF THE INDONESIA FAMILY LIFE SURVEY 5 (IFLS5)
	INTER-DISTRICT DISPARITY AND DISTRICT-LEVEL SPATIAL CLUSTERS/OUTLIERS IN EMPLOYMENT RATE IN INDONESIA 2015 AND 2018
2023	Province-level convergence analysis in China: New evidence from development stage indicators
	INTERREGIONAL INCOME INEQUALITIES IN KENYA, 2013-2020: A BI-DIMENSIONAL DECOMPOSITION APPROACH
	ASSESSING TRADERS' APPRECIATION OF AN ONLINE ONE-STOP-SHOP GOVERNMENT PORTAL:
	A CONJOINT EXPERIMENT IN THE PHILIPPINES
	DEMOTIVATING FACTORS AMONG VIETNAMESE PUBLIC HEALTHCARE WORKERS DURING THE CORONAVIRUS PANDEMIC
	Intrinsic motivation and perception on workplace: Generation Z in Vietnam
	THE IMPACT OF TELEWORK, SOCIAL RECOGNITION, AND WORKLOAD ON PUBLIC SERVICE MOTIVATION IN VIETNAM PUBLIC SECTOR DURING THE PANDEMIC - COVID 19
	GENDER AND YOUNG GENERATION'S PERCEPTION ON INTERNATIONAL LABOR MIGRATION: EXPERIMENTAL EVIDENCE FROM NGHE AN PROVINCE, VIETNAM

# Curriculum of MPMA Course 2024

Course Code	Course Name	Instructor	Credits	Semester	Year	Course Number	Notes
<b>Elective Required Courses (4 credits)</b>							
KT002	Master's Thesis Supervision 1	Kataoka, Mitsuhiro	2	Fall	1	MIB6011	
KT052	Master's Thesis Supervision 2	Kataoka, Mitsuhiro	2	Spring	1	MIB6011	
KT102	Master's Thesis Supervision 3	Kataoka, Mitsuhiro	2	Fall	2	MIB6011	
KT152	Master's Thesis Supervision 4	Kataoka, Mitsuhiro	2	Spring	2	MIB6011	
<b>Elective Courses 1 (10 Credits and over required)</b>							
KT201	Research Methodology	Yamada, Kyohei	2	Spring	1・2	MIB6211	
KT211	Applied Microeconomics	Lin, Ching-Yang	2	Fall 2	1・2	MIB6211	
KT221	Statistics for Economics and Management	Kataoka, Mitsuhiro	2	Fall	1・2	MIB6211	
KT231	Applied Econometrics	Jinnai, Yusuke	2	Spring	1・2	MIB6211	
KT241	Mathematics for Economics and Management	Kakinaka, Makoto	2	Fall 1	1・2	MIB6211	
KT251	Public Administration	Yamada, Kyohei	2	Fall	1・2	MIB6211	
KT261	Public Management	Nakajima, Manabu	2	Spring	1・2	MIB6211	
KT271	Public Finance and Budgeting	Lim, Seunghoo	2	Fall	1・2	MIB6211	
<b>Elective Courses 2 (16 Credits and over required)</b>							
<b>Public Management</b>							
KT301	Quantitative Methods for Policy Analysis	TBA	2	TBA	1・2	MIB6211	
KT311	Project Cycle Management	Fujita/Matsumoto	2	Spring	1・2	MIB6211	
KT321	Public Private Partnership	Arakawa, Jun	2	Spring 2	1・2	MIB6211	
KT331	Local Government and Public Services	Yamada, Kyohei	2	Spring	1・2	MIB6211	
KT341	Public Policy	Lim, S.	2	Spring	1・2	MIB6211	
KT361	Security Sector Analysis and Management	TBA	2	TBA	1・2	MIB6211	
KT302	Environmental Policy and Disaster Management	Lim, S.	2	Spring 2	1・2	MIB6211	
<b>Business</b>							
KT371	Human Resource Management	Jung, Jiwon	2	Fall	1・2	MIB6211	
KT381	Investment and Asset Pricing	Suzuki, Makoto	2	Fall	1・2	MIB6211	
KT391	Financial Accounting and Reporting	TBA	2	TBA	1・2	MIB6211	
<b>Economics</b>							
KT401	Inequality and Poverty	TBA	2	TBA	1・2	MIB6211	
KT411	Development Planning	Kataoka, Mitsuhiro	2	Spring 1	1・2	MIB6211	
KT421	Agricultural Economics and Policy Analysis	Kotani, Koji	2	Spring	1・2	MIB6211	Intensive course
KT441	International Finance	Kakinaka, Makoto	2	Spring 1	1・2	MIB6211	
KT451	Urban and Regional Economics	Kataoka, Mitsuhiro	2	Fall	1・2	MIB6211	
KT461	Japanese Economy	Kataoka, Mitsuhiro	2	Spring	1・2	MIB6211	
KT471	Development Economics	Kataoka, Mitsuhiro	2	Spring	1・2	MIB6211	
KT481	Asian Economic Development	Abe, Ryuichiro	2	Fall	1・2	MIB6211	
KT491	Applied Macroeconomics	TBA	2	TBA	1・2	MIB6211	
KT501	Cross Section and Panel Data Analysis	Wong, Y.	2	Fall	1・2	MIB6211	
<b>Special topics</b>							
KT511	Special Topics in MPMA	Resosudarmo, B.	2	春1	1・2	MIB6211	
KT512	Special Topics in MPMA	TBA	2	TBA	1・2	MIB6211	
<b>Optional Courses</b>							
KT601	Advanced Seminar1	Kakinaka, Makoto	2	Fall	1・2	MIB6211	Other Registration
KT611	Advanced Seminar2	Kakinaka, Makoto	2	Spring	1・2	MIB6211	
KT621	Advanced Seminar3	Kotani, Koji	2	Fall	1・2	MIB6211	
KT631	Advanced Seminar4	Kotani, Koji	2	Spring	1・2	MIB6211	
KT641	Advanced Seminar5	Yamada, Kyohei	2	Fall	1・2	MIB6211	
KT651	Advanced Seminar6	Yamada, Kyohei	2	Spring	1・2	MIB6211	
KT661	Advanced Seminar7	Lim, Seunghoo	2	Fall	1・2	MIB6211	
KT671	Advanced Seminar8	Lim, Seunghoo	2	Spring	1・2	MIB6211	

## Faculty list of MPMA Course



**KATAOKA, Mitsuhiro**

Professor

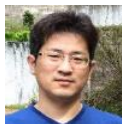
Ph.D. in International Development, Graduate School of International Development, Nagoya University, 2004

**Courses:** Statistics for Economics and Management, Development Economics, Urban and Regional Economics, Japanese Economy, Development Planning

**Research Interests:** Development Economics, Spatial Data Analysis, Income Inequality, Productivity Analysis, Regional Development

**Major publications:**

- Kataoka, M., & Darangina A. T. (2023). Imperial Manila syndrome in poverty reduction: a province-level spatial distribution analysis. *Asia-Pacific Journal of Regional Science*. doi.org/10.1007/s41685-023-00275-w
- Kataoka, M. (2022). Cyclical shocks and spatial association of Indonesia's district-level per capita income. *Asian Economic Journal* 36(3): 261-287 doi:10.1111/asej.12277
- Kataoka, M. (2022). Perspiration versus inspiration: sources of national and provincial output growth in Indonesia [1990–2015] using province-level non-parametric frontier analysis. *Asia-Pacific Journal of Regional Science*, 6(1), 113-139. doi:10.1007/s41685-021-00222-7
- Mendez, C., & Kataoka, M. (2021). Disparities in regional productivity, capital accumulation, and efficiency across Indonesia: A club convergence approach. *Review of Development Economics*, 25(2), 790-809 doi:10.1111/rode.12726
- Kataoka, M. (2020). Total factor productivity change in Indonesia's provincial economies for 1990–2015: Malmquist productivity index approach. *Letters in Spatial and Resource Sciences*, 13(3), 233-243. doi:10.1007/s12076-020-00256-z



**KAKINAKA, Makoto**

Visiting Professor

Ph.D. in Economics, Cornell University, 2006

**Courses:** Mathematics for Economics and Management, International Finance

**Research Interests:** International Economics, Financial and Banking Systems, Public Choice and Policy

**Major publications:**

- Iraman, E., Ono, Y., Kakinaka, M. (2022). Tax compliance and social desirability bias of taxpayers: Experimental evidence from Indonesia. *Journal of Public Policy* 42, 92-109.
- Mustafa, A.A., Lin, C.-Y., Kakinaka, M. (2022). Detecting market pattern changes: A machine learning approach. *Finance Research Letters* 47, 102621.
- Shrestha, S., Kotani, K., Kakinaka, M. (2021). The relationship between trade openness and government resource revenue in resource-dependent countries. *Resources Policy* 74, 102332.
- Hulugalla, N., Yamada, K., Kakinaka, M. (2021). Personal social capital and voluntary participation in the Village Development Programme in rural Sri Lanka. *Journal of International Development* 33, 803-825.
- N'dri, L.M., Kakinaka, M. (2020). Financial inclusion, mobile money, and individual welfare: The case of Burkina Faso. *Telecommunications Policy* 44, 101926.
- Htwe, N.N., Lim, S., Kakinaka, M. (2020). The coevolution of trade agreements and investment treaties: Some evidence from network analysis. *Social Networks* 61, 34-52.
- Hlaing, S.W., Kakinaka, M. (2018). Financial crisis and financial policy reform: Crisis origins and policy dimensions. *European Journal of Political Economy* 55, 224-243.



**KOTANI, Koji**

Visiting Professor

Ph.D. in Agricultural Economics, Cornell University, 2005

**Courses:** Agricultural Economics and Policy Analysis, Environmental Economics and Policy Analysis

**Research Interests:** Environmental and Natural Resource Management and Agricultural Economics

**Major publications:**

- Raja Timilsina, Koji Kotani, Yoshinori Nakagawa, Tatsuyoshi Saijo (2023). Does being intergenerationally accountable resolve intergenerational sustainability dilemma? *Land Economics*, (Forthcoming)
- Pankaj Koirala, Koji Kotani, Shunsuke Managi (2022). How do farm size and perceptions matter for farmers' adaptation responses to climate change in a developing country? Evidence from Nepal. *Economic Analysis and Policy*, 74 188-204.
- Raja Timilsina, Koji Kotani, Yoshinori Nakagawa, Tatsuyoshi Saijo (2022). Intragenerational deliberation and intergenerational sustainability dilemma. *European Journal of Political Economy*, 73 102131.
- Khatun Asma, Shibly Shahrier, Koji Kotani (2021). Cooperation and cognition gaps for salinity: A field experiment of information provision in urban and rural areas of Bangladesh. *Journal of Cleaner Production*, 311 127562.
- Mostafa Shahen, Koji Kotani, Tatsuyoshi Saijo (2021). Intergenerational sustainability is enhanced by taking the perspective of future generations. *Scientific Reports*, 11 2437.



**LIM, Seunghoo**

Visiting Professor

Ph.D. in Public Administration, Florida State University, 2015

**Courses:** Public Finance and Budgeting, Public Policy, Environment Policy and Disaster Management

**Research Interests:** Public Policy, Public Management

**Major publications:**

- Myomin, T., Lim, S. (2022) The emergence of multiplex dynamics between information provision ties and rescue collaboration ties in disaster response settings: A longitudinal network analytic approach to flooding cases in Myanmar. *Natural Hazards*.
- Tinivata, E. V., Lim, S. (2022) Which target group receives more responses from the government through a citizen participation policy?: The Fiji open-door policy based on a social construction framework. *Public Performance & Management Review* 45(2): 352-377.
- Dao, M. T., Lim, S. (2022) Fear of disasters within the risk communication network of foreign students in Japan amid the COVID-19 pandemic crisis: A cohort design. *International Journal of Disaster Risk Reduction* 71: 102808.



**YAMADA, Kyohei**

Visiting Professor

Ph.D. in Political Science, Yale University, 2013

**Courses:** Research Methodology, Public Administration, Local Government and Public Services, Japanese Politics

**Research Interests:** Local Government, Intergovernmental Relations, Japanese Politics and Government

**Major publications:**

- Byambaa, M., Yamada, K. (2023). Descriptive social norms and herders' social insurance participation in Mongolia: A survey experiment. *Journal of International Development*, 35(1), 143–162.
- Yamada, K., Park, G. (2022). Aging and the politics of monetary policy in Japan. *Japanese Journal of Political Science*, 23(4), 333–349.
- Susmerano, E. B., Yamada, K. (2022). Revisiting auxiliary social services for persons with disability: The Philippines case. *International Journal of Social Welfare*, 31(2), 187–202.
- Hulugalla, N., Yamada, K., Kakinaka, M. (2021). Personal social capital and voluntary participation in the Village Development Programme in rural Sri Lanka. *Journal of International Development*, 33(5), 803–825.
- Yamada, K., Arai, K. (2021). Do boundary consolidations alter the relationship between politicians and voters? The case of municipal mergers in Japan. *Local Government Studies*, 47(4), 519–545.

---

## <List of Part-time Lecturers>

### **ARAKAWA, Jun**

Aichi Prefectural Government Office  
MA in International Relations, International University of Japan, 1989  
Candidate for Ph.D., Keio University  
**Courses:** Public Private Partnership

### **WONG, Chun Yee**

Assistant Professor, International University of Japan  
PhD in Economics, the University of New South Wales, 2015  
**Courses:** Cross Section and Panel Data Analysis

### **JINNAI, Yusuke**

Associate Professor, International University of Japan  
Ph.D. in Economics, University of Rochester, 2013  
**Courses:** Applied Econometrics

### **LIN, Ching-Yang**

Associate Professor, International University of Japan  
Ph.D. in Economics, University of Wisconsin-Madison, 2010  
**Courses:** Applied Microeconomics

### **MYOE, Maung Aung**

Professor, International University of Japan  
Ph.D. in Political Science and International Relations,  
Australian National University, 2000  
**Courses:** Security Sector Analysis and Management

### **SUZUKI, Makoto**

Associate Professor, Bunkyo University  
Ph.D. in Economics, Saitama University, 2012  
**Courses:** Investment and Asset Pricing

### **ABE, Ryuichiro**

Visiting Lecturer, University of Tokyo, Waseda University,  
Takusyoku University  
M.A. in Advanced Social and International Studies,  
University of Tokyo, 2001  
**Courses:** Asian Economic Development

### **JUNG, Jiwon**

Assistant Professor, International University of Japan  
Ph.D. in Public Administration and Policy  
Arizona State University, 2020  
**Courses:** Human Resource Management

### **FUJITA, Nobuko**

Executive Director, Foundation for Advanced Studies on International  
Development  
Ph.D. in Policy and Management  
Doshisha University, 2010  
**Courses:** Project Cycle Management

### **MASTUMOTO, Sachiko**

Deputy Director, Foundation for Advanced Studies on International  
Development  
M.A. in Governance and Democracy  
Erasmus University Rotterdam, 2007  
**Courses:** Project Cycle Management

### **RESOSUDARMO, Budy Prasetyo**

Professor, Development Economics, Australian National University  
PhD program in Economics of Development  
Cornell University, 1991  
**Courses:** Special Topics in MPMA



## Event & News in 2022-2024

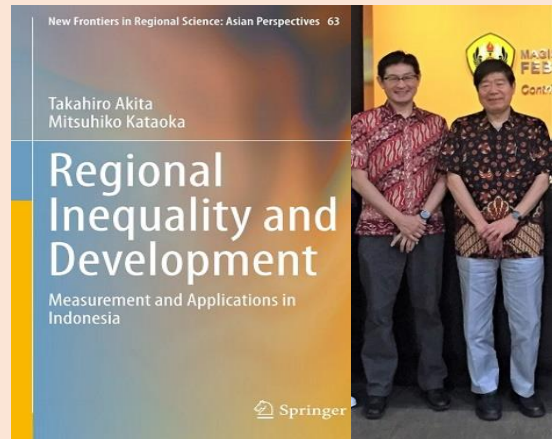
### Professor Mitsuhiro KATAOKA has published a co-authored book with Springer

August, 2022

Professor Mitsuhiro KATAOKA has co-authored a book with Professor Takahiro AKITA entitled “Regional Inequality and Development: Measurement and Applications in Indonesia” and published as part of Springer’s book series called “New Frontiers in Regional Science: Asian Perspectives.”

This book bridges the gaps between theory and practice in regional inequality analysis. Readers can develop their analytical skills through our learning-by-doing teaching policy, as it presents several data analysis methods using Stata.

Thus, it is used as teaching material in the regular coursework of the master’s program and short-term training programs for government officials and practitioners.



### Rikkyo-UNPAD (Indonesia) International Seminar 2023 Summer: Fostering Academic Exchange and Celebrating Success

July, 2023

In a significant milestone for academic collaboration, Rikkyo University's MPMA hosted the 11th Joint International Seminar with the Management of the Faculty of Economic and Business, University of Padjadjaran (MM-UNPAD), Indonesia, from July 26 to 30.

The seminar united 20 students from both Executive and Regular MA Programs at MM-UNPAD with their counterparts at our campus, providing a unique opportunity for a meaningful exchange of knowledge and ideas. This event was particularly momentous as it marked the first seminar held since the outbreak of the COVID pandemic.

Throughout the seminar, the visiting UNPAD students were immersed in a diverse and enriching program, including lectures by esteemed MPMA professors. The lectures covered crucial topics related to Japan, such as depopulation, local government roles, and human resource management practices. The seminar also included an exciting field visit to the Tokyo Stock Exchange, offering a firsthand experience of Japan's financial dynamics and global significance.



The academic exchange extended to research proposals presented by the UNPAD students, who received valuable feedback from the MPMA professors, fostering constructive discussions and promoting a deeper understanding of research methodologies. The seminar culminated in a joyous final reception, celebrating the successful academic activities and strengthening the bond between participants. Notably, Ms. Karina Anggia Silalahia, a double-degree program graduate from the MPMA and MM-UNPAD, delivered a remarkable speech, exemplifying the profound impact of international collaboration on academic journeys. This event marks a promising beginning for future joint initiatives, enriching the academic experiences of students and faculty from both Rikkyo University and the University of Padjadjaran, Indonesia.

## Event & News in 2022-2024

### Graduation Ceremony

September, 2023



We're delighted to announce the successful Graduation Ceremony for our seventh batch of MPMA students at our Ikebukuro campus on September 19th!

This year we have 7 graduates, originally from China, Kenya, the Philippines, and Vietnam.

As our graduates step into their professional journeys, they're equipped with the grit, resilience, and intellectual assets gained during their time at Rikkyo.

Now, they're ready to extend their impact beyond our campus, making a better world in their local communities and the global arena.

We're confident in their boundless potential to contribute to a better world, and we can't wait to see the positive change they'll bring.

### Field Trip in 2023 Winter

February, 2024



On December 26-27, 2023, a group of twenty-five MPMA students from Cambodia, Bangladesh, Vietnam, the Philippines, the Kyrgyz Republic, China, Tanzania, São Tomé and Príncipe, and Ghana explored Hokkaido, the northernmost island of Japan, first developed in the late 19th century due to its abundant agricultural, forestry fishery and mining resources, Hokkaido has a rich historical background.

After arriving at New Chitose Airport, we moved to Otaru, a historic international port city near the provincial capital of Sapporo. Otaru is known for its well-preserved buildings and picturesque landscapes shaped by Japan's industrialization. The city has recently become known for its stylish cafes and delicious fresh seafood restaurants, adding to its cultural charm.

Moving on to *Jozankei*, known for its hot springs, students enjoyed communal dinners and relaxing spacious baths. The second day brought excitement with a snow-covered trek in *Jozankei*, which attracts winter sports ecotourists.

These hands-on experiences highlighted the shift from agrarian and mining economies to service-oriented regional development. Going beyond the regular classroom setting, this two-day trip provided valuable insights into the unique challenges that their countries are facing in the field of regional development in the periphery.



More comments  
are being brought in  
by students  
on the website!